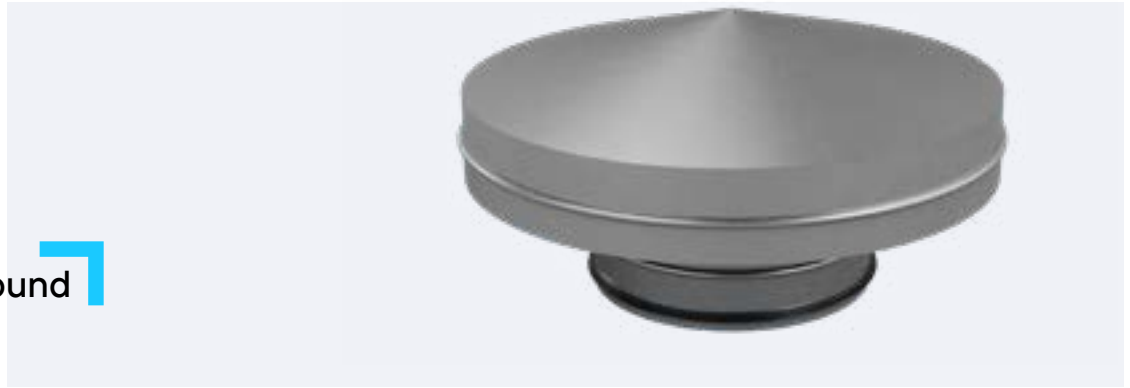


## Roof hood, round

dh-r



✓ Free choice of dimensions

✓ Lower pressure difference thanks to large suction areas

✓ Optimum protection against the elements

### Product information

DL roof hoods in a round design serve to route exhaust air and facilitate the intake of outside air. The air intake/outlet openings are fitted with a bird protection grille to protect against small animals and foreign bodies. In order to prevent the entry of precipitation, the streamlined hood extends to cover the intake/outlet openings.

To ensure secure installation of the hood, it comes with a clip-in connector with metal ribbing as standard. In terms of the intake of outside air, it is important to ensure that sufficient distance to the roof area is maintained in order to prevent leaves, snow, etc. from being sucked into the duct. In the event of extreme weather conditions (driving rain/snow), roof hoods do not offer complete protection against the entry of precipitation.

### Technical data

#### Material

- Galvanised steel
- Aluminium
- Stainless steel
- Copper

#### Pressure rating

#### Leakage class

#### Diameter:

min. DN 80/max. on request

#### Recommended air velocity

- Outside air < 6 m/s
- Exhaust air < 8 m/s

#### Finish

- Powder coating as per RAL
- Wet painting as per RAL
- NCS or DB

#### Temperature resistance

80 °C to 100 °C

#### Connector

- Clip-in connector
- Lip seal in EPDM rubber
- Flange for clamping ring
- Flat flange behind flange

### Order code legend

#### Order code

DH-R-W-D1-A-O

#### Material (M)

- VZ – galvanised
- ALU – aluminium
- V2A – stainless steel V2A
- V4A – stainless steel V4A

#### Opening in mm

D – Diameter

#### Connector (A)

- Clip-in connector and metal ribbing
- U – lip seal in EPDM rubber
- FFB – DIN 24154 flat flange behind flange
- BS- flange and clamping ring

#### Optional (o)

- KÖ – crane eyelets
- P-RAL... – powder coating
- L-RAL... – painting
- RAL colour of choice

#### Accessories.

- Roof duct
- Rain hood
- Roof mount
- Crane eyelets

#### Example

Roof hood, galvanised, DN 1250 and crane eyelets

#### Order code

DH-R VZ-1250-U-KÖ